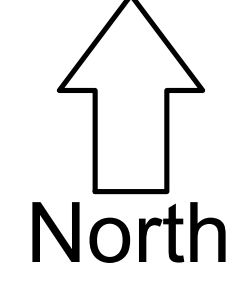


Train Mountain Railroad

April 1, 2018

1" = 600'



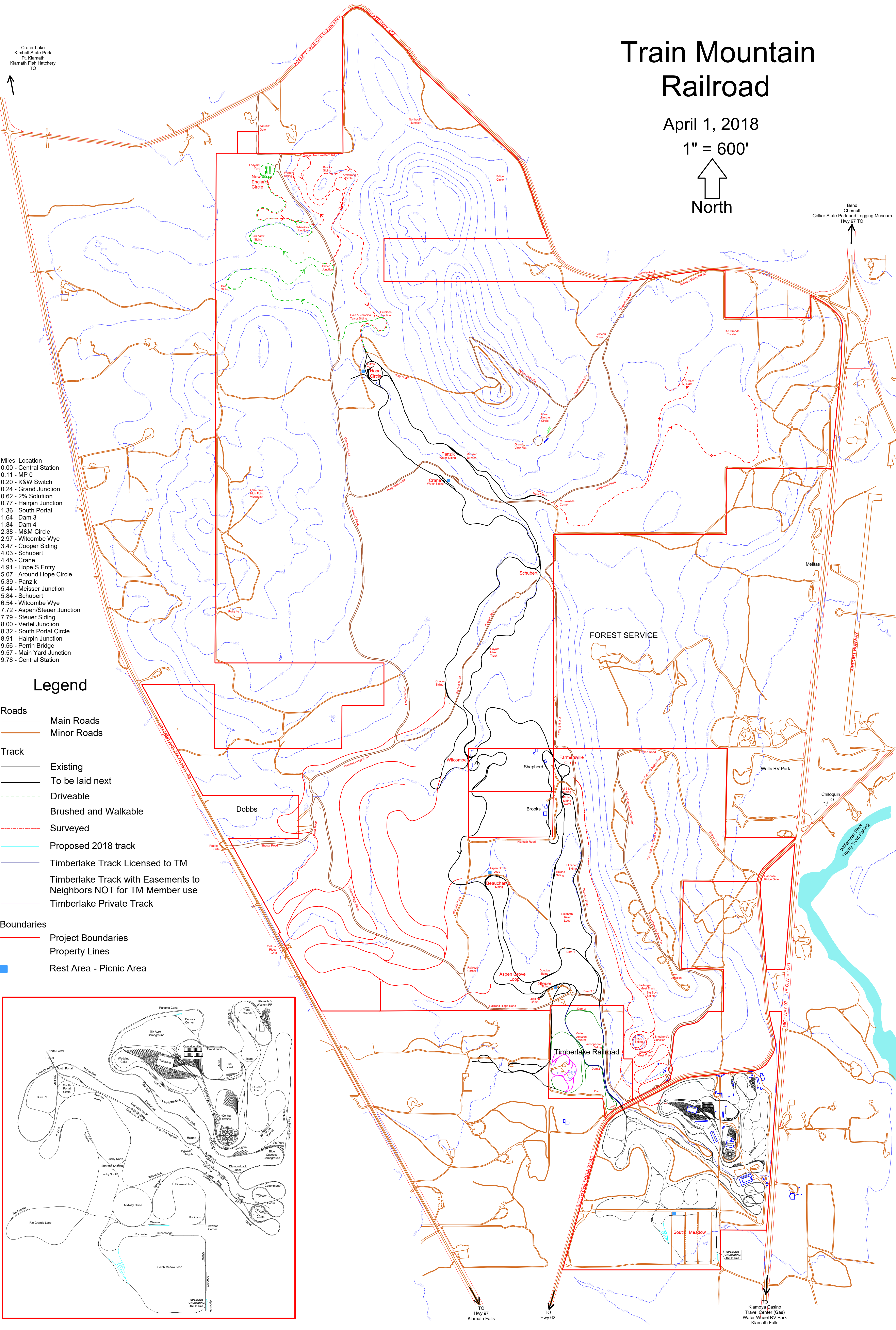
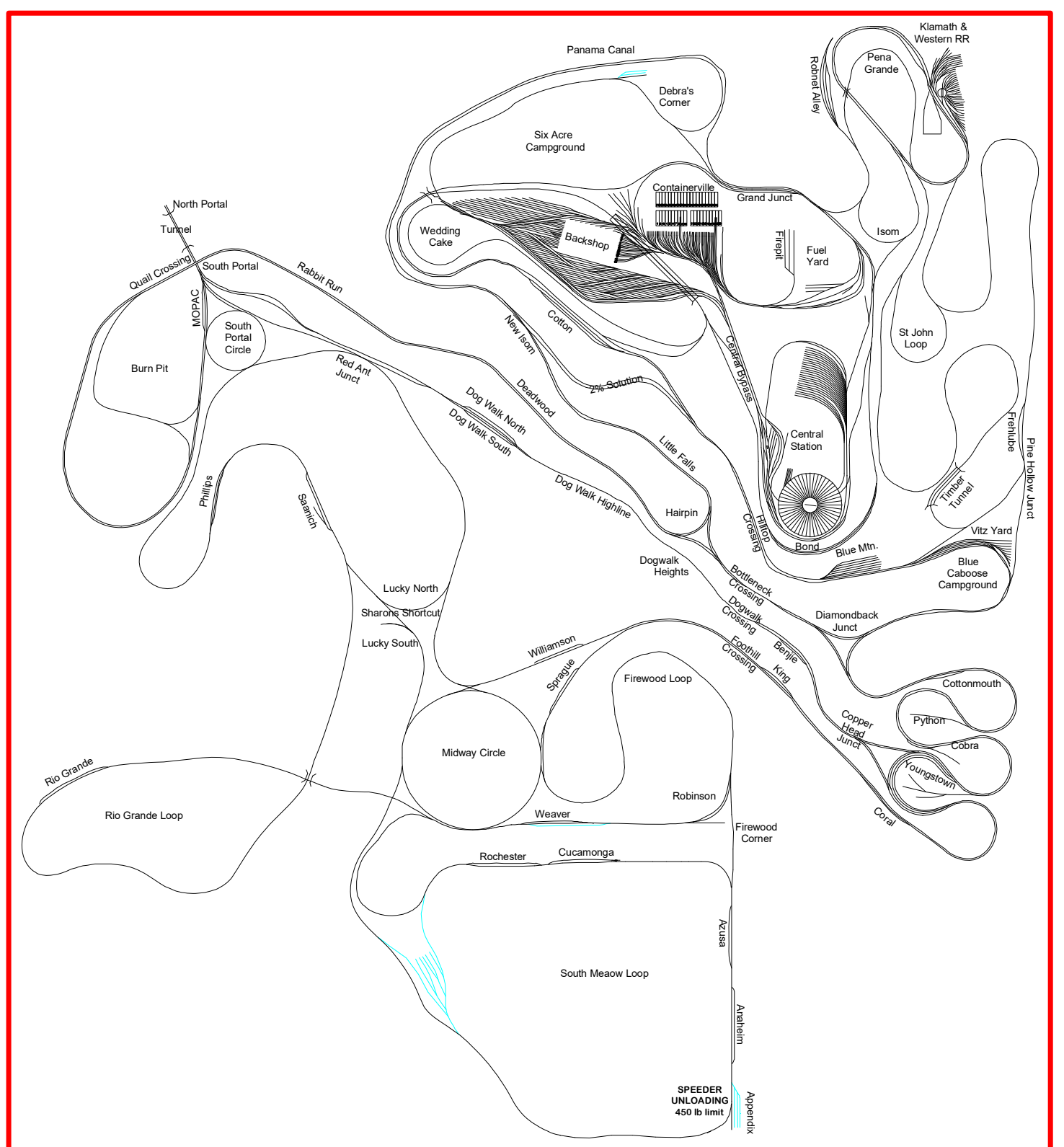
Crater Lake
Kinball State Park
Ft. Klamath
Klamath Fish Hatchery
TO

Bend
Chenutt
Collier State Park and Logging Museum
Hwy 97 TO

- Miles Location
- 0.00 - Central Station
 - 0.11 - MP 0
 - 0.20 - K&W Switch
 - 0.24 - Grand Junction
 - 0.62 - 2% Solution
 - 0.77 - Hairpin Junction
 - 1.36 - South Portal
 - 1.64 - Dam 3
 - 1.84 - Dam 4
 - 2.98 - M&M Circle
 - 2.97 - Witcombe Wye
 - 3.47 - Cooper Siding
 - 4.03 - Schubert
 - 4.45 - Crane
 - 4.91 - Hope S Entry
 - 5.07 - Around Hope Circle
 - 5.39 - Panzik
 - 5.44 - Meisser Junction
 - 5.84 - Schubert
 - 6.54 - Witcombe Wye
 - 7.72 - Aspen/Steuer Junction
 - 7.79 - Steuer Siding
 - 8.00 - Vertel Junction
 - 8.32 - South Portal Circle
 - 8.91 - Hairpin Junction
 - 9.56 - Perrin Bridge
 - 9.57 - Main Yard Junction
 - 9.78 - Central Station

Legend

- Roads**
- Main Roads
 - Minor Roads
- Track**
- Existing
 - To be laid next
 - Driveable
 - Brushed and Walkable
 - Surveyed
 - Proposed 2018 track
 - Timberlake Track Licensed to TM
 - Timberlake Track with Easements to Neighbors NOT for TM Member use
 - Timberlake Private Track
- Boundaries**
- Project Boundaries
 - Property Lines
 - Rest Area - Picnic Area



TO Hwy 97 Klamath Falls

TO Hwy 62

TO Klamoya Casino Travel Center (Gas) Water Wheel RV Park Klamath Falls