



## GETTING READY!!

It's January, and we should be playing in the snow, but instead it is unseasonably warm. Bad for the snow pack, but good for getting ready for the next running season - particularly the Triennial.

Our hard working volunteer, Dave Savage, continues to clean up storm debris and removing unwanted brush. We have been talking about brush removal to lower the fire danger for quite some time. What many had not recognized just how bad the brush has become.



Dave has been on a brush removal project that is motivated by a goal other than fire protection. We needed to reclaim the main road going from Blue Caboose down the hill to Katy Lane, South Meadow and Midway.

As the brush was being cut back, we were shocked to discover that approximately one third (1/3) of the pavement was under the brush. That narrow road isn't really that narrow. That "tight" corner isn't really that tight.





Nor is it a blind corner. You can actually see around the corner now.

In these images, you can see the old dirt line on both sides of the pavement.



I can't wait to see what this will look like after all the brush is hauled to the burn pit.



## Major Accomplishments 2014

By: Jerry Crane

Now that we are starting a new year, it is time to look back as review what we accomplished in 2014. We got a lot done this last year.

New track was installed from Witcombe to Aspen Grove, eliminating the requirement to run on bi-directional track. The old aluminum on wood ties track from Little Falls to Rabbit Run was removed and replaced with steel track on plastic ties. Hairpin Curve in this section of track was regraded and realigned for improved running.

We finished installing a new septic system for Central Station. No more high fees to have the old system pumped out when it got full. Central Station now meets building code requirements for proper fire egress. The guest rooms in Central Station have been upgraded and the handicap restrooms on the east side of the building have been repaired and reopened. A new commercial grade refrigerator and a matching freezer have been donated.

Code required handrails have been installed on the steps going down into steaming bays in Crisp Yard, the turntable and the backshop. Several persons have commented that the handrails have kept them from taking a fall.

New model buildings and picnic tables have been constructed and /or repaired and installed. Several new water faucets have been added to South Meadow. And, of course, we removed tons of pine cones and needles.

I know there were several other accomplishments, and I apologize if I missed the one you worked on. I would like to thank all of you that worked so hard to make Train Mountain the best in the world.

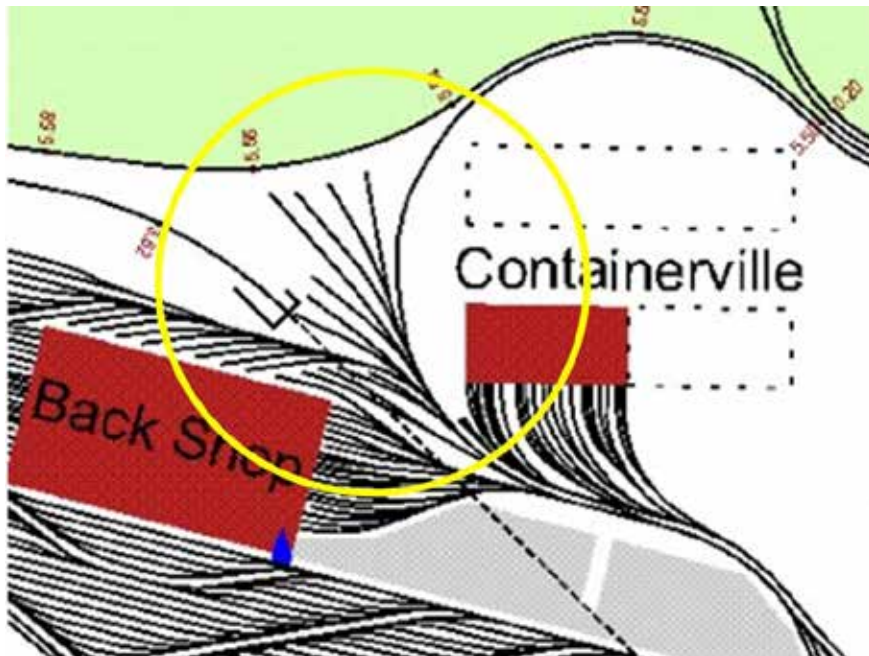
Thank you!



## Electrics, electrics, electrics! - Triennial Committee

OK so you plan a 2,200 acre OUTDOOR railroad. How many electrical outlets would you install? This is not a trick question. The fastest growing segment of our hobby is the electrics or battery powered locomotives. That is good news for the hobby. Registration is way up from all previous years for the 2015 Triennial, again good news. However combining those two pieces of good news is causing us (the Triennial Committee) some issues. How to recharge all of those batteries!

As of today we have 87 electrics registered and our Track Allocation chairman (Dean Willoughby) says **ALL** of the currently available charger spots are allocated and its only **January**. We have a few plans to **add more** but that still may **NOT** be enough.



Here is a sample of what is already in the works, using the area previously used to store the pre made turnouts as a new 'electric' yard. It is close to a major power source so wiring will be less of an issue. Dennis and Richard are spearheading this particular project. Some track realignment and some new track will be added to this area along with the necessary outdoor outlets.

So here goes a plea to the electrics. Please remember **YOU** are responsible for your charging equipment, which should include your own charger and a minimum of a 50 foot power cord. This power cord needs to be rated high enough to handle your charger.

Additionally the later you wait to register the chances are greater that we will **NOT** have a place for you to plug in. So you might also want to add a small generator to your list of things to bring along with your electric.

## From the President - Tom Watson

We ended 2014 at Train Mountain feeling that a great deal has been accomplished due to all the hard work done by all the volunteers. Myself and the other "office staff" want to thank each and every person that has helped make Train Mountain a better place.

Not only is the Triennial in June of this coming summer, but on May 15-17, 2015, we are hosting a regional Boy Scout Camporall at Train Mountain. Their last Camporall, four years ago, was attended by 750 Scouts.

The Scouts will set up camp in South Meadow, which will be their main activity center. However, they will be setting up "Events" in many areas of our "Southside" facility (south of South Chiloquin Road).

Train Mountain has been asked to set-up and provide some train related "Events." For last summer's Scout Camporee, the Rickmans ran the 7-1/2" gauge Switching Puzzle Event and have agreed to run that Event again for the 2015 Camporall. The Vanderspecs ran a Rail Bike Event in 2014, and have agreed to run a Rail Bike Event for the 2015 event. Both of these Events were extremely popular. We also have a "O" Gauge Switching puzzle available, and will be looking for a volunteer to take charge of that Event. It will be set up in the Vendor Building.

A First Aid Station will be set-up in the Vendor Building in the same location where we always place it. Many other Events will also be set up in the Vendor Building.

**This means that all of the "STUFF" presently occupying the Vendor Building MUST BE REMOVED by May 1, 2015.**

No Exceptions, as we must have sufficient time to clean and prepare the area for the Scouts and the Triennial.

The Scouts have requested Shuttle Trains to haul the boys between Events. We will need many volunteers for this and other chores associated with showing off our facility to the Scouts, their leaders and families. We need volunteers that can bring equipment and volunteers that can just come to help out.

We had a specific request to have as many trains as possible on display.

Any one wishing to help with any of these activities please contact the Train Mountain Office.

## 2015 Triennial Update: by Dennis Ward

Triennial sign ups continue at a high rate. Including men, women and children, 583 people have signed up as of January 15<sup>th</sup>. Up from 453 reported last month. There are 256 trains registered (up from 208) totaling 8772 feet (up from 6684') in length. That is 1.66 miles of trains. We see no letup in signups.

A reminder to those who plan on bringing equipment—**You must be a Train Mountain member to bring equipment to Train Mountain.** This means you will have to have a 2015 membership prior to bringing your train to Train Mountain.

Of the people already signed up to bring equipment 16 have not yet signed up for membership in the 2015 season.

We are still looking for chairperson for the following areas: (Remember – the Blue Caboose campground is reserved exclusively for committee chairpersons).

Campground Host: 6 Acre Campground.

Campground Host: South Meadow.

Seminars.

Train Tours.

We are again making the road between Central Station to South Meadow via Blue Caboose campground one way during the Triennial and the preceding work week. The new plan is to use the Katy Lane gate as the entrance to the event with the one way traffic going uphill from South Meadow to Central Station and the Main Gate as opposed to downhill as it has been in the past. We believe that this will help to relieve congestion at the Main Gate and Four-Way crossing.

From my point of view this is going to be the biggest and best Triennial event ever.

If you have not arranged for housing while at the Triennial, the link at <http://www.tmrr.org/pages/lodging.shtml> is a partial list of rentals rooms and houses in the vicinity of Train Mountain.

A reminder that rates will go up again at the first of February. So – get your reservation in soon. The train parking is being established on a first come first served basis based on date of reservation. We are already scrambling as we approach two miles of trains

## **Train Mountain is a NO SMOKING Facility**

**During recent events, many Members and their Guests have been ignoring this policy. There are only three designated smoking areas at Train Mountain:**

- (1) Outside the front of the Backshop**
- (2) Outside the east door of the Hall of Flags**
- (3) Outside the Motor Pool (Maintenance Building)**

**Due to the high fire danger at Train Mountain during the summer, we have zero tolerance for anyone smoking outside one of the designated areas.**

**There is NO SMOKING anywhere out on the track!**

**Members, Guests, and Visitors that continue to violate the Train Mountain Smoking Policy may be asked to leave.**

### **Visitors to Train Mountain:**

Train Mountain is very popular and is continually attracting visitors from throughout the world. We announce that our hours are from 10:00 AM until 3:00 PM Monday through Friday during the summer, and 10:00 AM to 2:00 PM during the winter. The office is closed on weekends except during meets, and then only when volunteers are available to open the office.

Our insurance advisors request that all people (members and visitors) complete and sign a liability release. If **YOU** as a member encounter visitors on the property without a visitors pass please direct them to the office so that we can insure that a release has been completed and a visitors pass has been issued.

If **YOU**, as a member, open the gate and allow visitors to pass through - **YOU** are responsible to see that the release has been completed. Releases are available in the mailboxes near the office for those times the office is closed. There are also releases available in the kitchen and in the back shop.

***If you do not want to, or do not have the time to, ensure that the releases are completed*** - then please graciously explain that the train park is closed to visitors and that the open hours are normally (Winter) 10:00 AM until 2:00 PM Monday through Friday. To arrange other hours visitors should call the office at 541-783-3030.

## **Correction:**

In the November Gazette article introducing Joyce Merwin, our new Office Administrator, we reported that Joyce had served on the Chiloquin Visions in Progress Board.

Joyce sent the following correction:

“It was my husband, John, who served on the Chiloquin Visions in Progress (CVIP) Board. I did work for a school term as an Aide for Chiloquin Learns After School, one of CVIP’s programs, though. If it is of any consolation, I was the Chief Financial Officer of a private school in California for a good many years and remained their CFO until shortly after we moved to Oregon.”



# Lillyville -- by Seymour Skandals



Expect to see lots of cows in Lillyville this year as Old McDonald expands his herd.



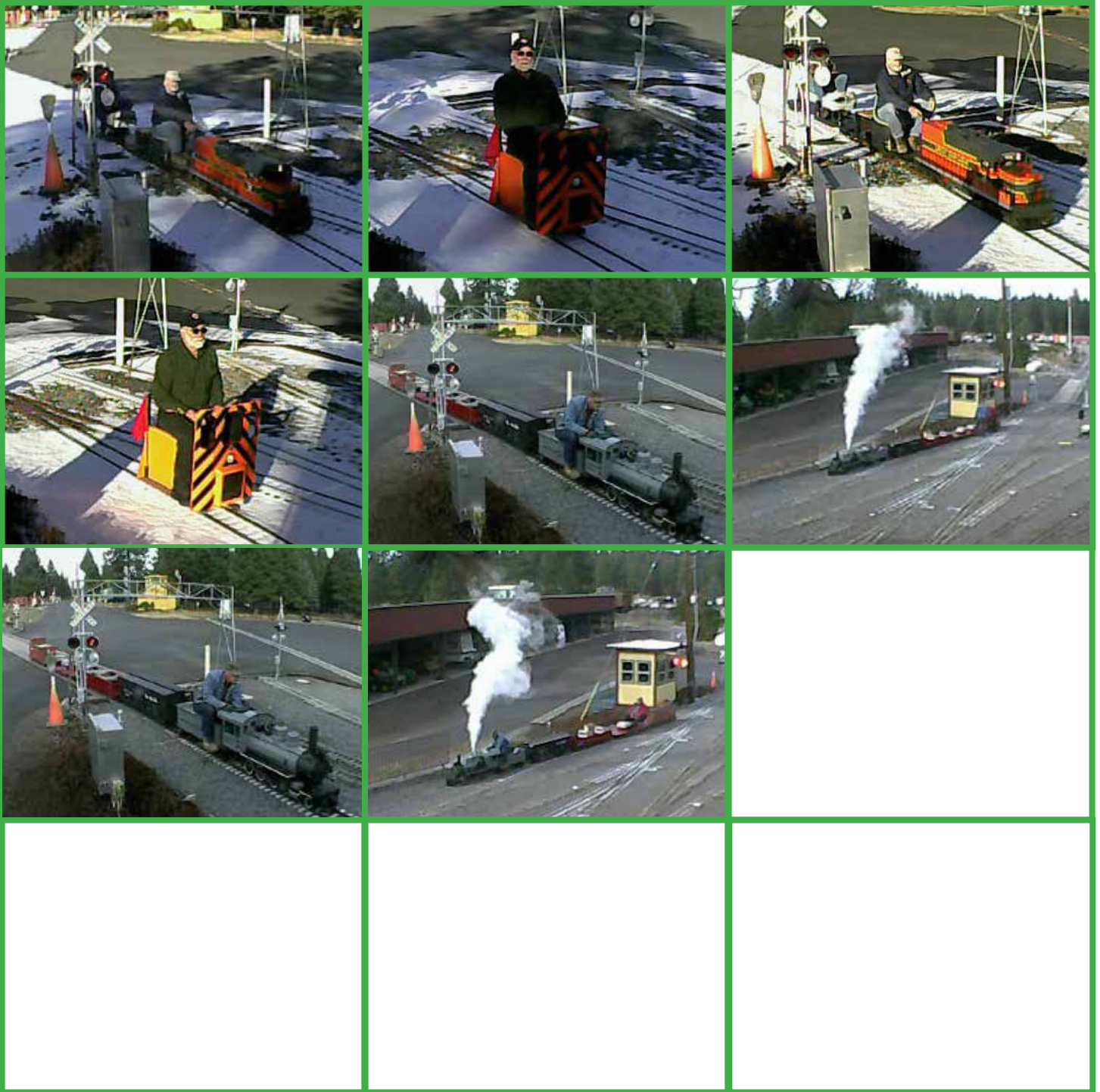
The news from the Lillyville Building Department this month reports ten new mining cabins are now under construction.





# WEB-CAM GALLERY

Photos by: The Web-Cam



**Register for the Triennial Meet now!!**

Please Use the Online App to Register or Join-- <http://tmrrmembers.org>

# CLASSIFIEDS

## Building Lots For Sale!

Train Mountain member has 4 nice home / vacation building lots for sale.

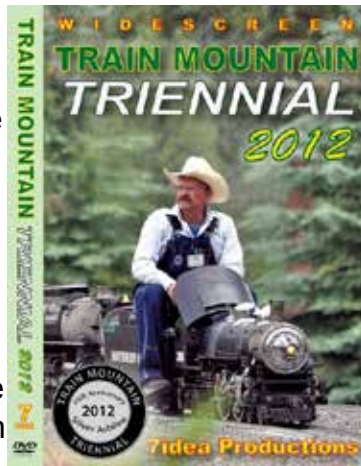
Prices reduced! Lots are located in an established subdivision just a few minutes from Train Mountain. Home owners association provides free water and well maintained all-weather roads. Lots range in size from .7 acre to .25 acre, all lots have phone and water to the lot, 1 has power to the lot, power close by the other 3 lots.

Cash or short term contract.

**Priced from \$7,000 to \$8,500 (below tax value).**

**Call owner at 360-673-2277 or 360-703-7063.**

The terrific video that Aaron Bentsen from 7Idea Productions shot at the 2012 Triennial is available through the main office at Train Mountain. Give them a call at 541-783-3030 and get your on the way to your place. It's \$30 for the video and \$3 shipping and handling lower 48, \$4 S&H for all others. A most enjoyable video shot by a true video artist and of course our favorite subject, Train Mountain!



Our good friend Jim over at Discover Live Steam has also placed ads for us on his terrific website, thanks Jim. [www.discoverlivesteam.com](http://www.discoverlivesteam.com)

Did you see the great article and front cover story from the January / February 2013 issue of Live Steam and Outdoor Railroading? It is a most complimentary article about the facility and the great gang of folks that hang around the place and put on terrific live steam train meets. Pretty cool! [www.livesteam.net/home](http://www.livesteam.net/home)



**Donations\$  
Needed!**

### HAVE SOMETHING YOU WANT TO SELL?

Place an ad in the Gazette!

1/8 Page: \$25/month or \$250/year

1/4 Page: \$40/month or \$400/year

1/2 Page: \$70/month or \$700/year

Full Page: \$125/month or \$1250/year

Published by Train Mountain Railroad

P.O. Box 438

Chiloquin, OR 97624

Email: [info@tmrr.org](mailto:info@tmrr.org) Phone: 541-783-3030

Contributors: TMRR BOD, Friends, TMI

Photos: Tom Watson





Quentin Breen's Amtrak, gifted to Sharon, unfortunately must be sold. Vanguard engine with new battery, hand-held controls & six matching gondola cars for \$18,000. Cars are great for your lunches, misc. tools, fire equipment or pets. Cab-excellent shape, cars can use touch-up paint.

Contact: sharonbreen87@gmail.com



**FOR SALE – One 40 foot container (track ready) delivered to Train Mountain and placed in Containerville. \$5500 each.**

**Call Bill Dobbs (610-772-4478)**



Located only 1.5 miles off Hwy 97 in Downtown Chiloquin in the same building as the Post Office  
212 1st Avenue, Chiloquin, OREGON 97624 -- Phone: (541) 783-2268





## Kla-Mo-Ya Casino

34333 Hwy 97 N  
Chiloquin, OR 97624  
541-783-7529 or 1-888-KLAMOYA  
[www.klamoyacasino.com](http://www.klamoyacasino.com)

Kla-Mo-Ya Casino opened in 1997 and is owned and operated by the Klamath, Modoc and Yahooskin Tribes. Set in the beautiful pines of Southern Oregon, we are located on Highway 97 near the junction of Highway 62 (Crater Lake Highway).

We are open 24 hours a day, 365 days a year, and welcome travelers and groups from across the country year round.

Our Peak to Peak Restaurant is open 24 hours a day, with a full service lounge and beverage service available out on the gaming floor. Choose from great menu items like juicy steaks, classic salads and pastas, or try our beefy Triple 7 Burger if you are *really* hungry. Dine in or take out, we have a host of friendly staff to serve you. Check out our current menu from the Dining page of our website, and watch for monthly special features. The Peak to Peak restaurant welcomes groups, meetings or parties for special occasions.

Open from 7am to 9pm, the Espresso Bar serves a wide variety of espresso and coffee drinks, hot or cold, as well as fruit smoothies, frozen yogurt, desserts, and quick to-go lunches.

Our gaming floor has 344 slots with new games and themes being brought in all the time. Find out about our current slot promotions and check out recent jackpot winners on our website and Facebook page.

Try your hand at one of our four Blackjack tables. We offer double deck and six-deck blackjack with \$3 tables available every Monday. Keep up with promotions and tournaments available by checking our website.

Hours of operation:

Weds & Thurs: 12 noon – 8pm

Friday through Sunday: 12  
Noon – 12 Midnight

(closing times may vary depending on play)

Stop by the Bonus Club to sign up for a free membership card to earn rewards and qualify for our many promotions and giveaways. While you are there, browse through the unique selection of items in our Gift Shop.

RVers, Truckers and large vehicles are always welcome, with plenty of free overnight parking available. Stop by the Bonus Club to ask about discounts and perks.

Come enjoy the warmth and excitement of Kla-Mo-Ya casino.





## **Crater Lake Junction Travel Center**

34005 Hwy 97 N  
Chiloquin, OR 97624  
541-783-9800

The Crater Lake Junction Travel Center opened for business in 2010, and is owned by the Klamath, Modoc and Ya-hooskin Tribes. Open 24 hours a day and located just next door to Kla-Mo-Ya Casino as you enter, this travel center offers competitive fuel prices and many convenience items.

Travelers can fuel up with gas, diesel, or propane. Stop in for a snack or soda, or grab a quick meal featuring Mexi-Go or Mountain Fresh Pizza. Free Wi-Fi, a comfortable lounge with large screen TVs, laundry and shower facilities, and ATMs are all available.

Make sure to ask for a Crater Lake Junction Travel Center rewards membership card so that you can earn points for each purchase and visit. Your earned points can be applied toward future purchases.

Truckers, ask about trucker services and benefits for each visit. Convenience items and truck accessories are for sale, along with many useful daily provisions.

### **Crater Lake National Park**

Crater Lake National Park is located off Highway 62, just 34 miles from Kla-Mo-Ya Casino and the Crater Lake Junction Travel Center. After playing and fueling up, discover the world-famous beauty and amazing history of Crater Lake. Groups and parties, ask about casino shuttle service for your outing or adventure.

### **Shuttle Service to and from Train Mountain**

Kla-Mo-Ya Casino and the Crater Lake Junction Travel Center are also offering a free shuttle service for Train Mountain Members, Guests and Visitors.

Train Mountain people should see the TM Office for more details as we get this service implemented.